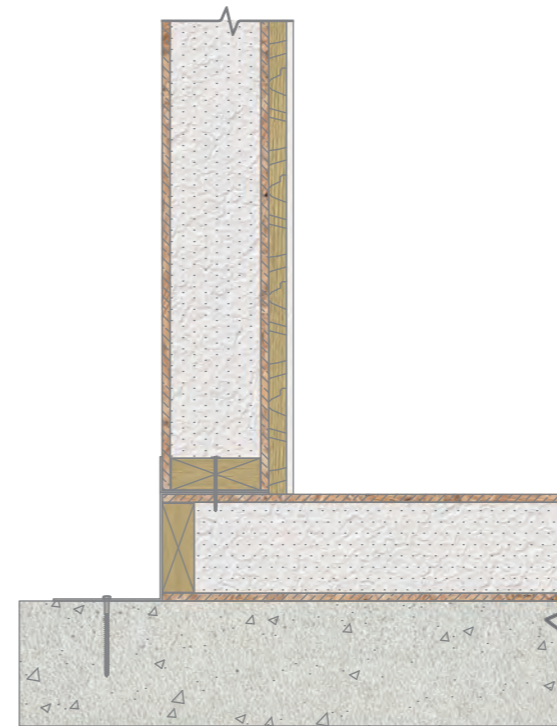


Prefabricated SIP construction allows for quick set up of units inside of building.

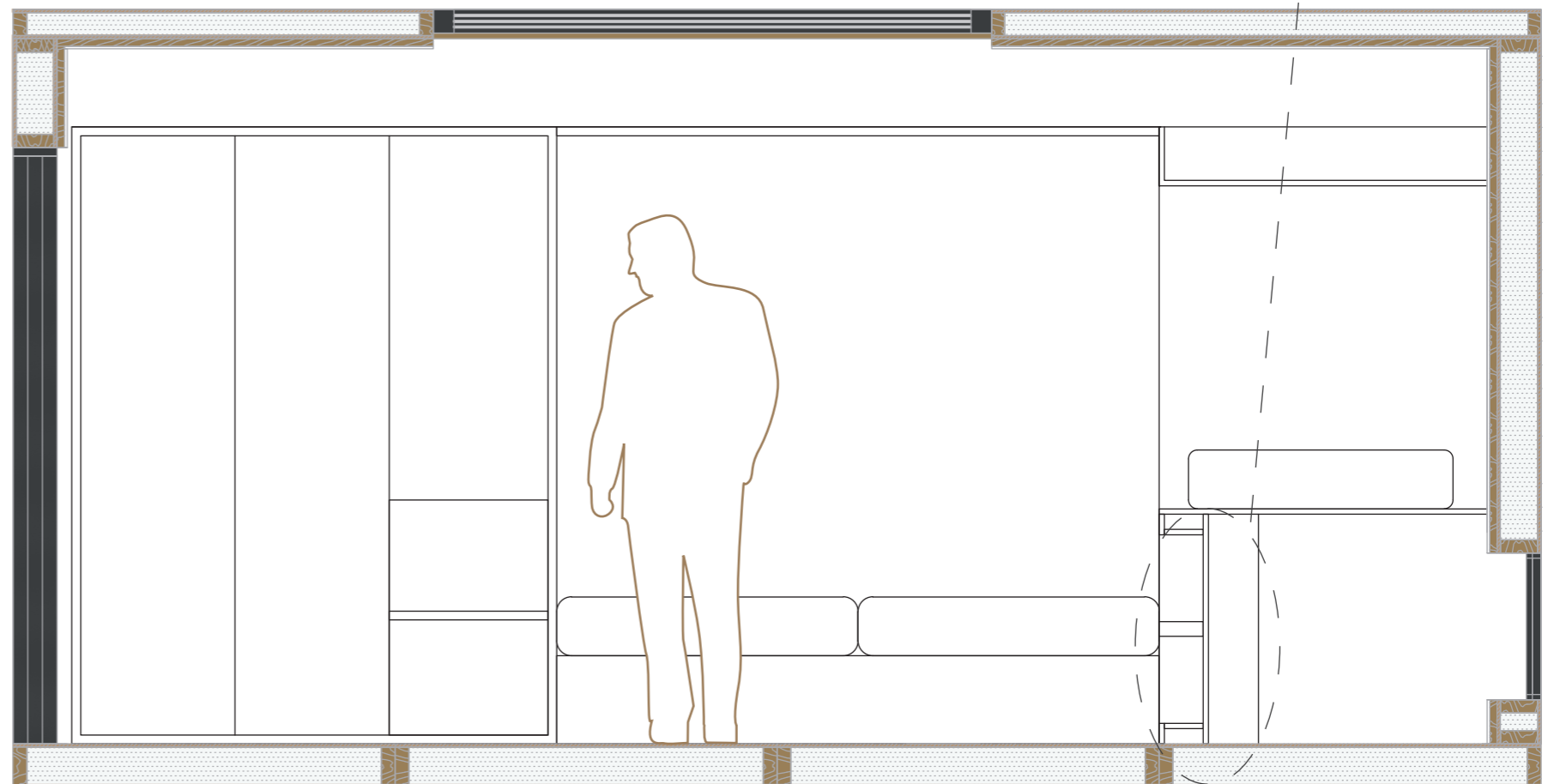
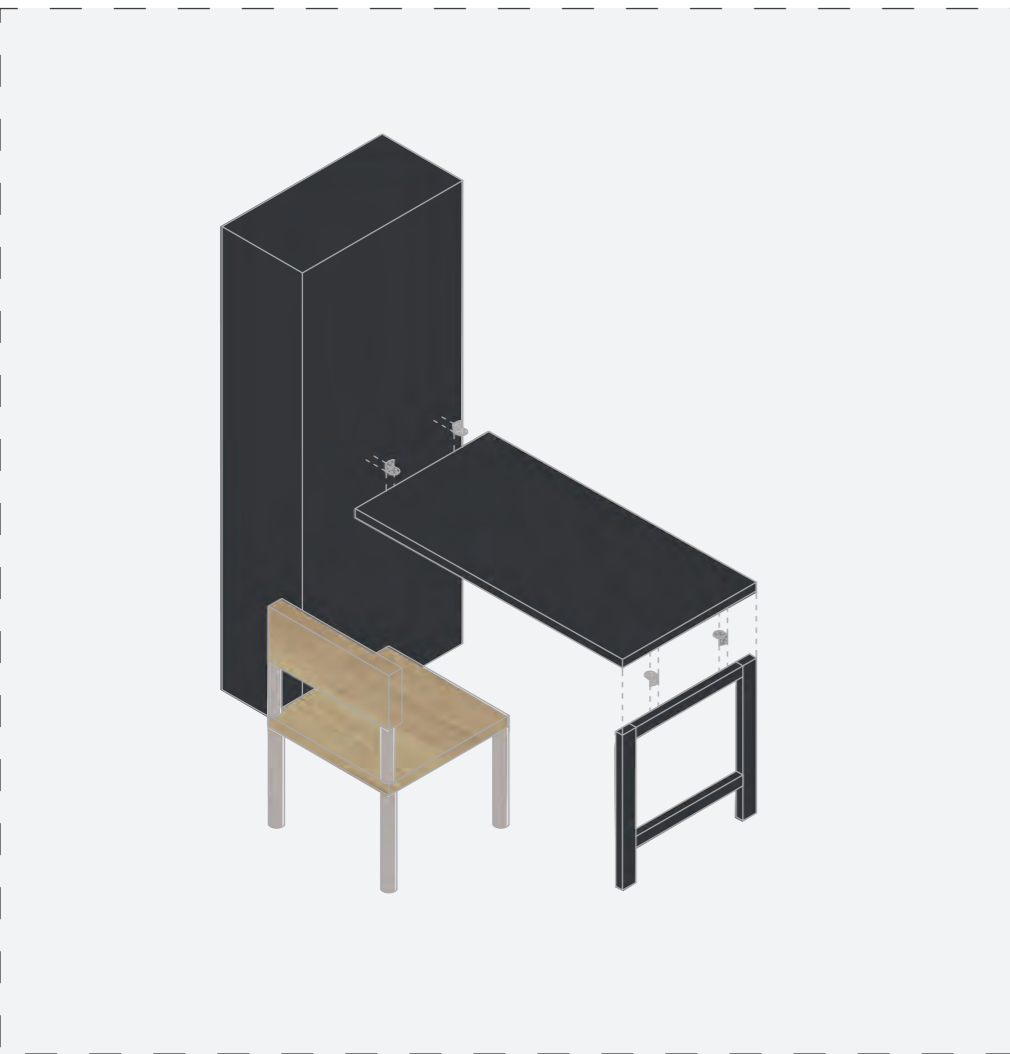
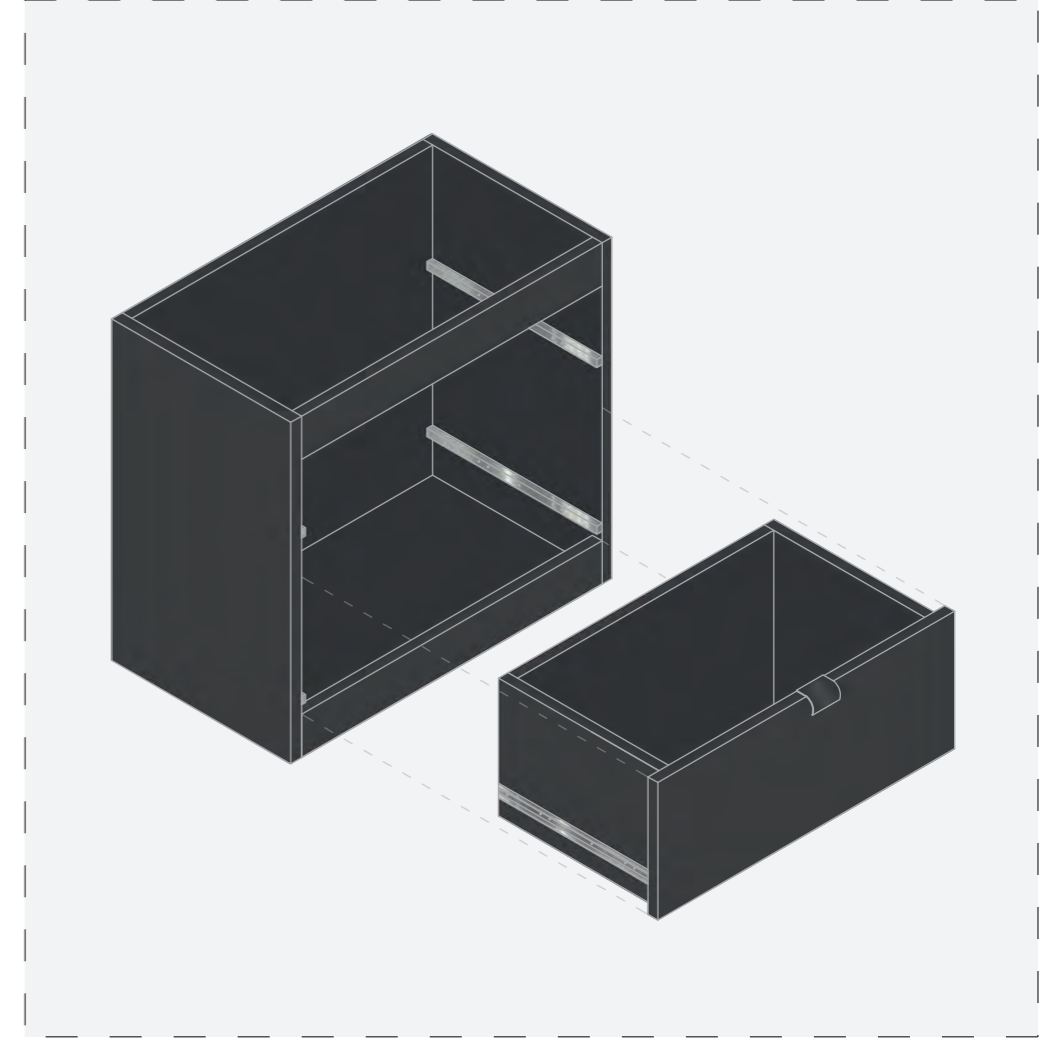
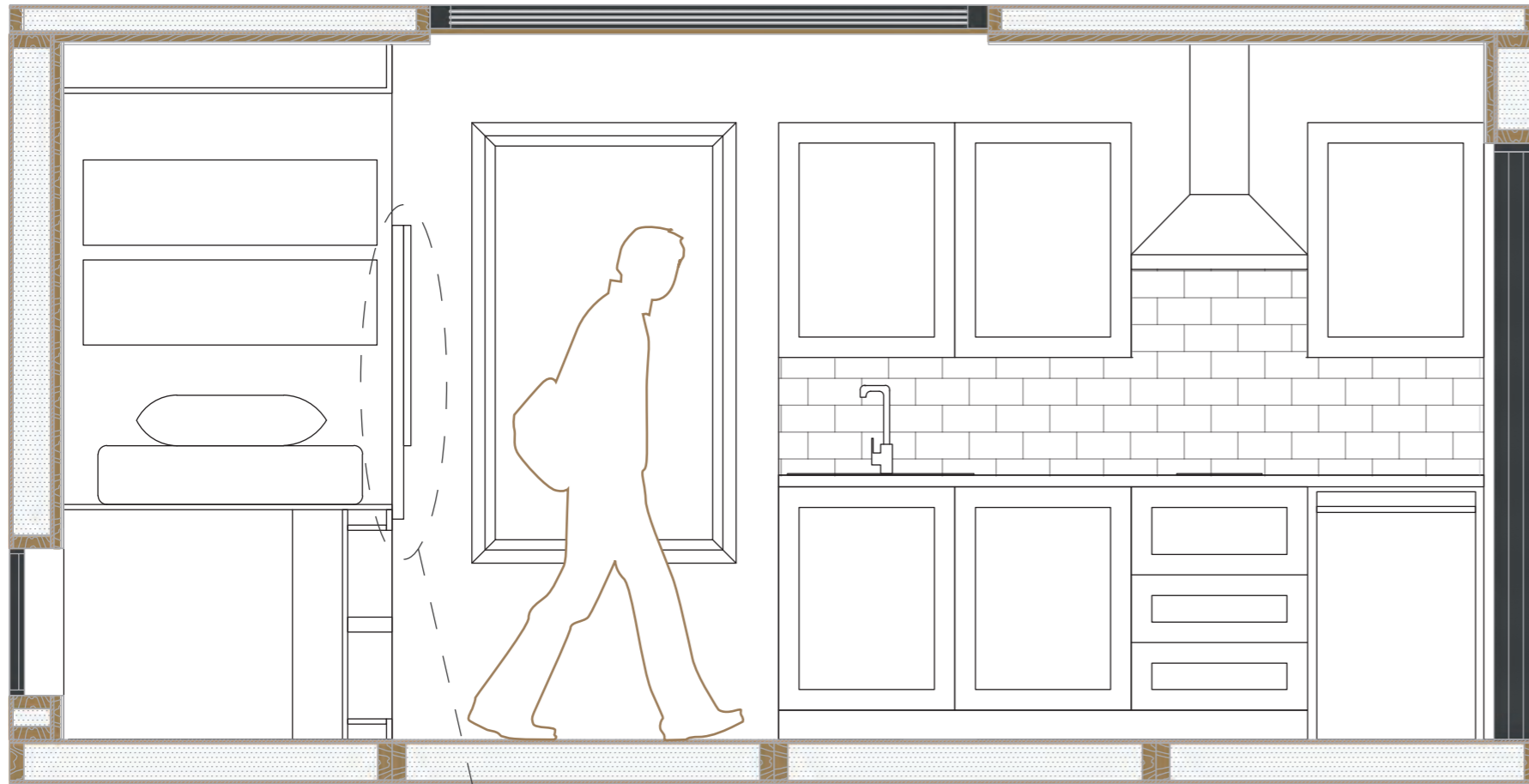
Each user is allocated one housing unit, and one bathroom unit for their personal use. Both units fall under the user's responsibility to keep clean and tidy.

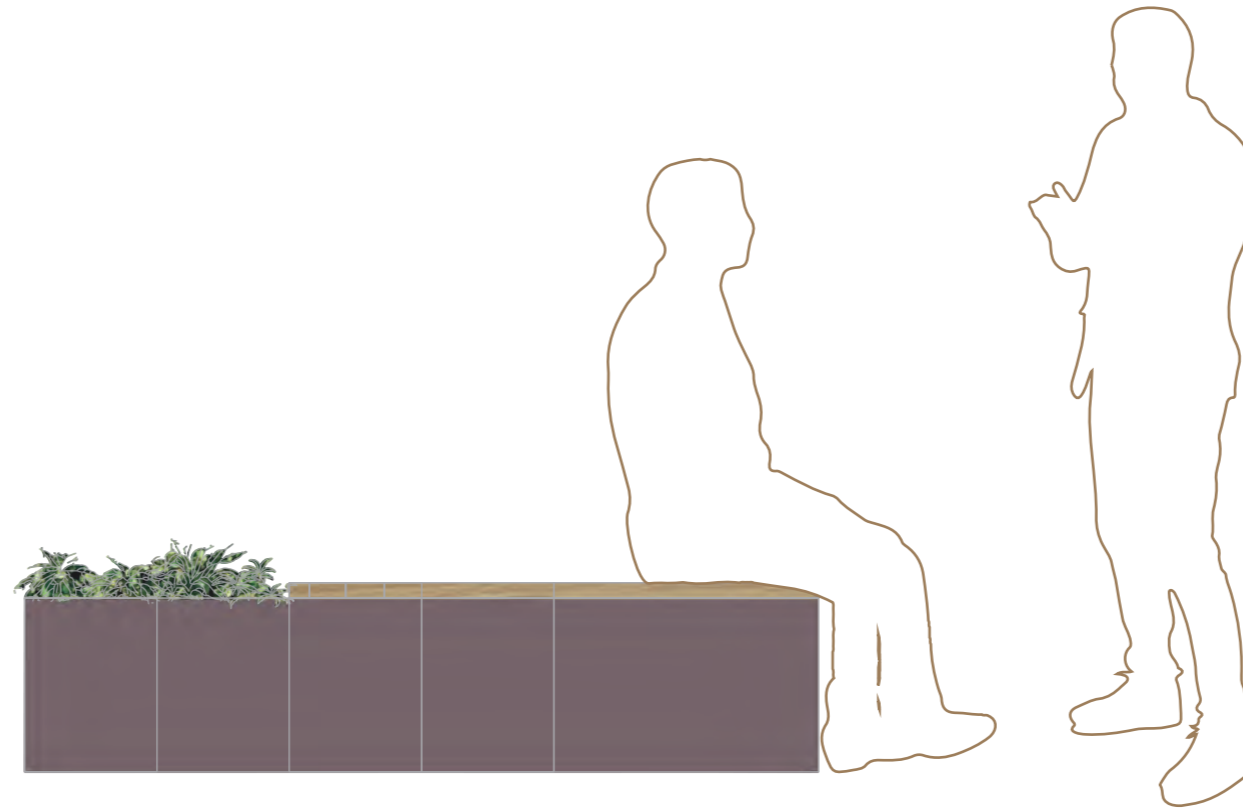
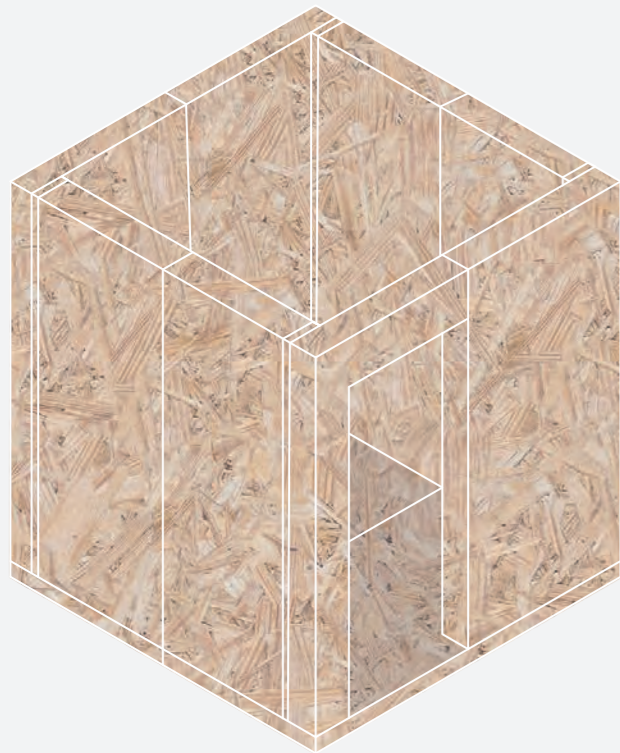


Each unit will use the existing building's electricity to power lighting and heating. The units will also use the building's water system to provide clean water for each user.

Bathroom units are backed onto one another to run the waste pipe out towards the drainage.

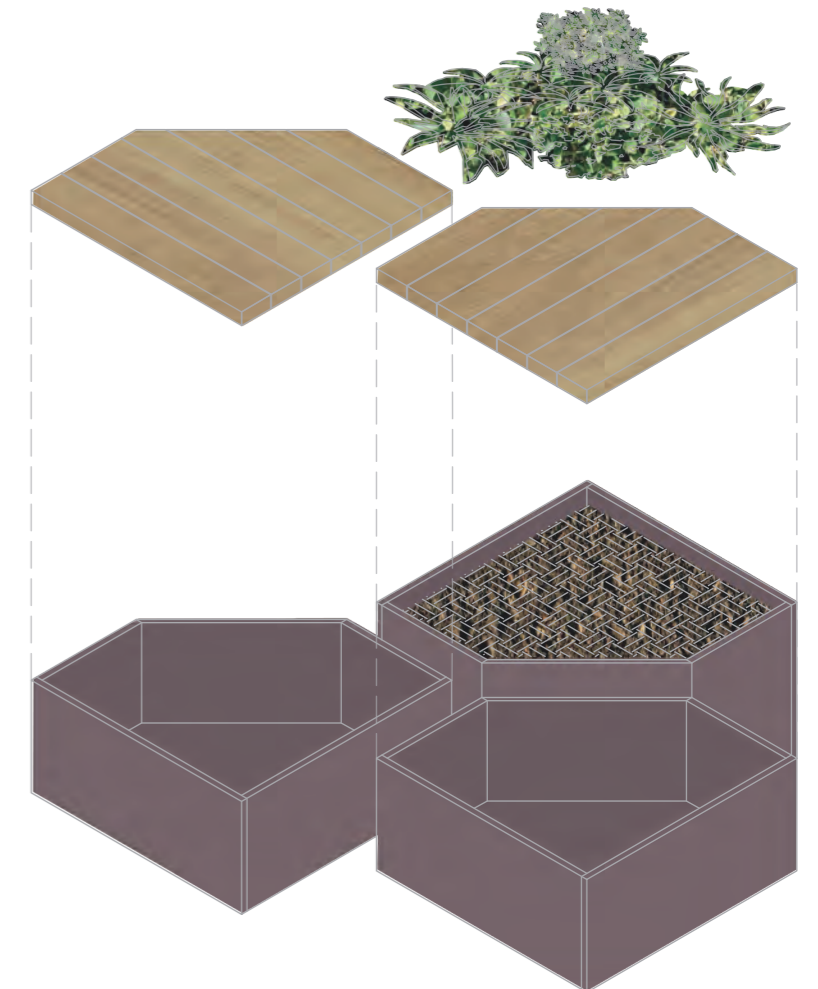
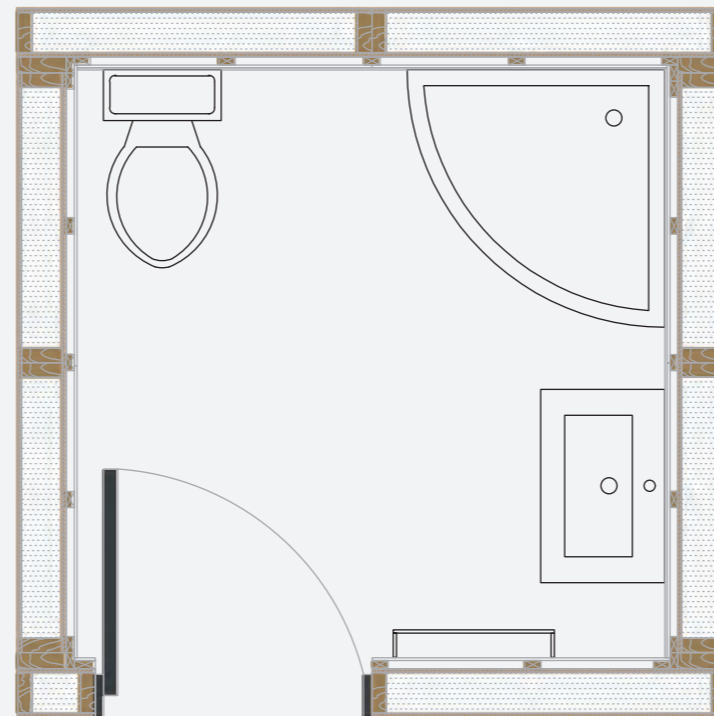


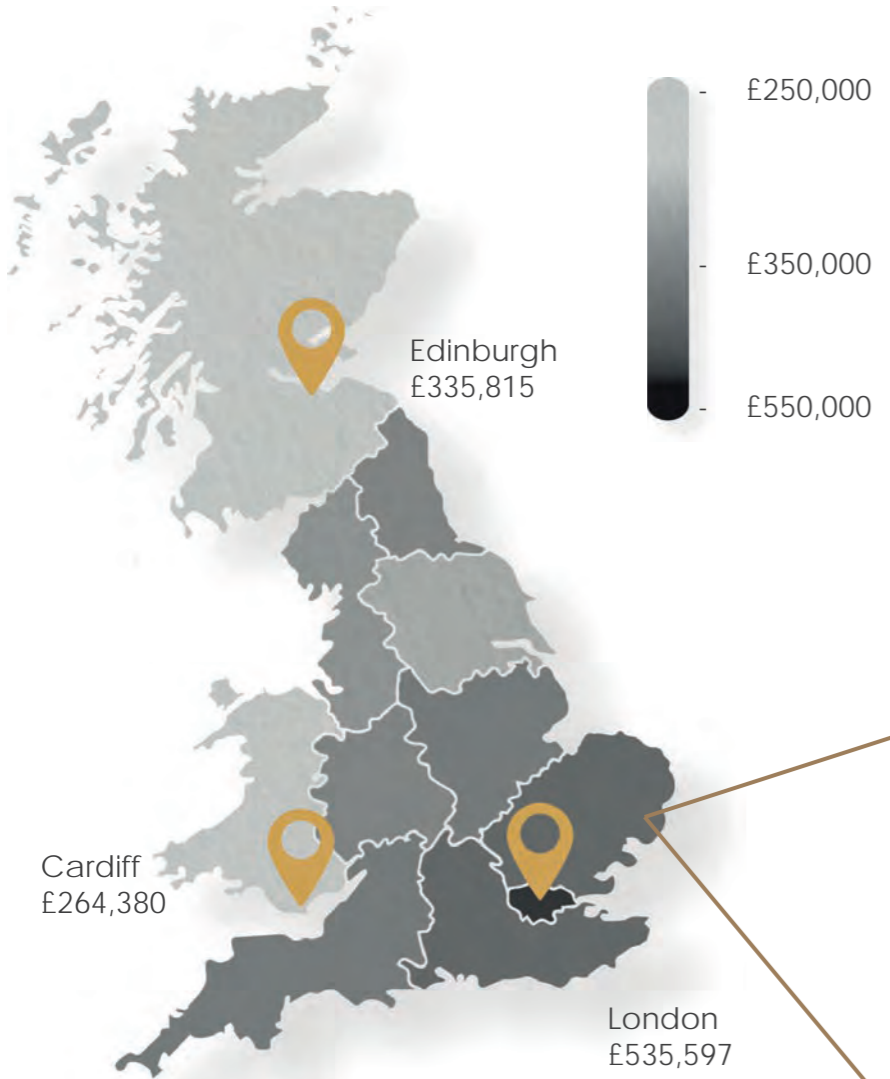




Modular seating will be placed outside of the units which can be used either as communal seating or a plant bed. They are made from left over materials from the units, so less waste is discarded.

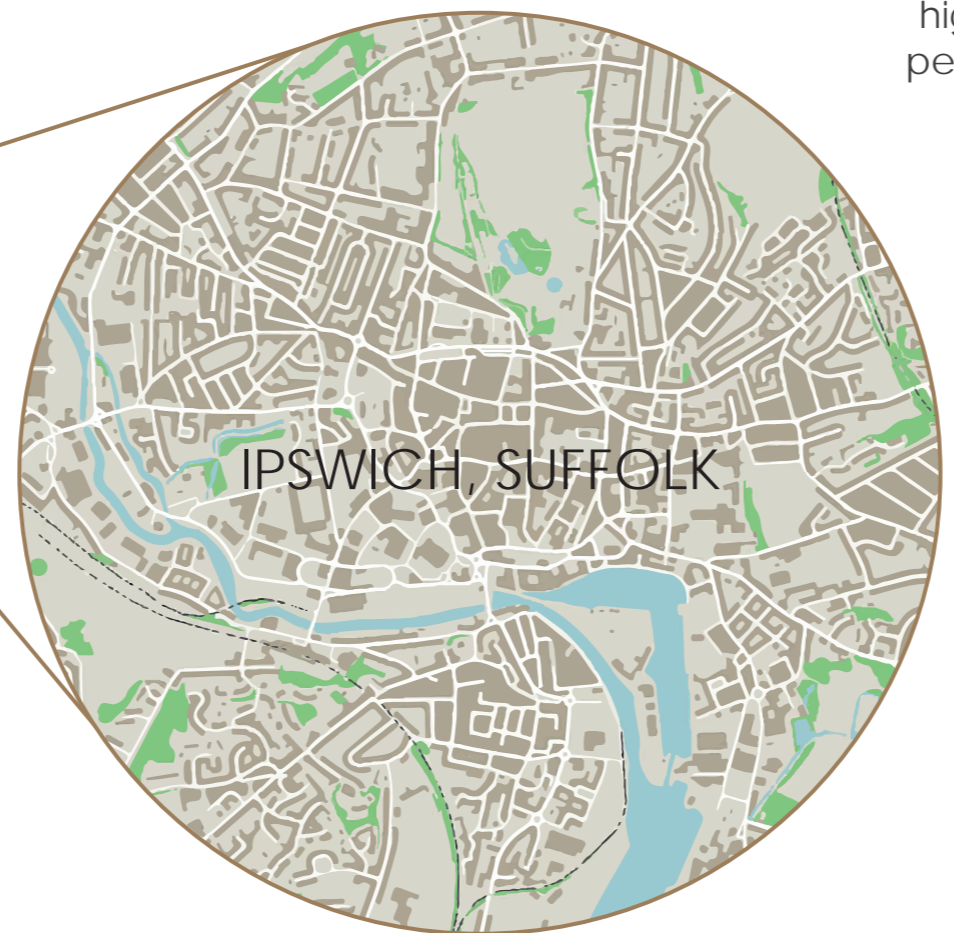
Communal seating will encourage users to connect with each other, reducing the anxiety in their situation as they will all be in the same boat.





Global conflicts such as the pandemic and the cost-of-living crises have pushed the price of housing through the roof, leaving thousands unable to afford their bills or basic necessities. This will eventually lead to an incline of issues such as homelessness, lack of affordable social housing and an overwhelming number of cases for local authorities. This instability surrounding the future of the housing market is an issue that concerns everyone. This project explores the solutions surrounding the issue

of homelessness in the UK, finding a way to intervene between rough sleeping and living in uncomfortable temporary accommodation. The outcome of this project will be to identify a practical solution to the issues the housing market is currently facing, whilst still containing the key elements of what makes a home through use of furniture, fixtures, and equipment, lessening the mental impact for its users and shedding light on the darkness that is the future of the housing market.



Ipswich has one of the highest homeless counts, per head of population, in the country

In 2017-18 there were 264 homeless presentations to Ipswich Borough Council

The vast majority of the local authority accommodation is full

Average House Price in the United Kingdom (UK) in August 2023, by Capital City



My project will aim to make use of these empty buildings by creating insertable housing that can easily be installed or removed, through the reliance of prefabricated construction.

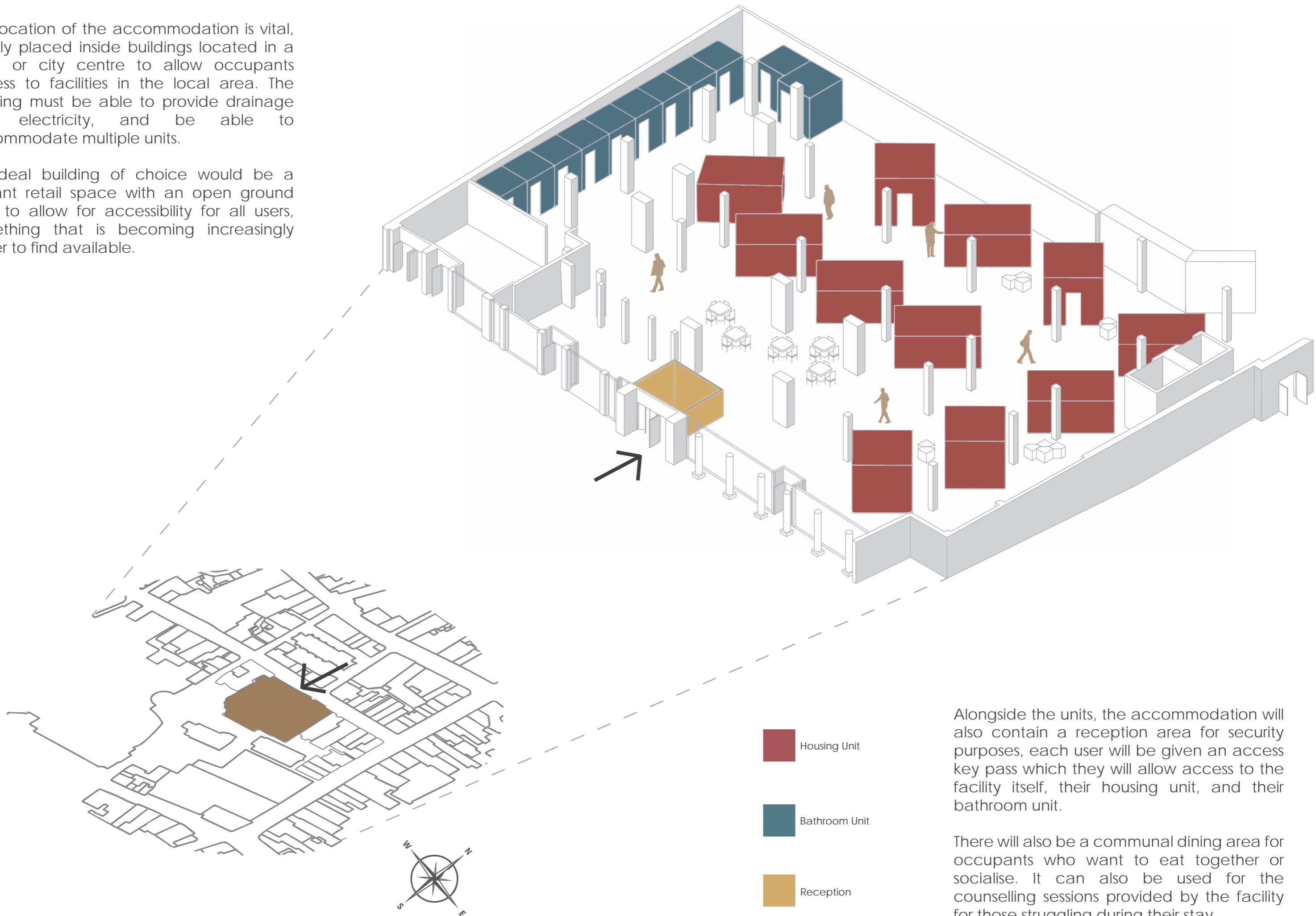
High streets are becoming increasingly vacant, with a overall total of 14,081 chain store closures in the UK in 2023.

This will create a new life in the dying high streets, bringing new uses and new jobs into city and town centres.



The location of the accommodation is vital, ideally placed inside buildings located in a town or city centre to allow occupants access to facilities in the local area. The building must be able to provide drainage and electricity, and be able to accommodate multiple units.

An ideal building of choice would be a vacant retail space with an open ground floor to allow for accessibility for all users, something that is becoming increasingly easier to find available.



Alongside the units, the accommodation will also contain a reception area for security purposes, each user will be given an access key pass which they will allow access to the facility itself, their housing unit, and their bathroom unit.

There will also be a communal dining area for occupants who want to eat together or socialise. It can also be used for the counselling sessions provided by the facility for those struggling during their stay.